

# SELECT SURFACES AC5 LAMINATE FLOORING - GALLERY SERIES

## TOOLS AND MATERIALS

- Vapor barrier (minimum 6 mil / 0.15 mm) (if needed)
- Transitional moldings (if needed)
- Measuring tape
- Carpenter's square
- Utility knife
- Safety glasses
- Pencil/marker
- Dust mask (NIOSH-designated)
- 3/8 in (10 mm) thick spacers
- 2 in (51 mm) wide moisture resistant adhesive tape
- 100% silicone caulking
- Handsaw or doorjamb saw (fine-toothed blade)
- Power saw (any of the following): table saw, miter saw, circular saw or jigsaw

NOTE: Safety glasses and gloves should be worn at all times.

## PREPARATION

**Acclimation:** Select Surfaces laminate floors must be acclimated to the conditions of your home before they are installed. To do so, cross-stack unopened cartons in the area where they will be installed and away from outside walls, heat, and air conditioning vents for 48 hours. Installation temperatures should be at a minimum of 64°F (18°C). The ideal conditions are 40%-70% of relative humidity.

**Expansion Space:** Select Surfaces laminate flooring expands and contracts with changes in relative humidity. Leave a 3/8 in (10 mm) expansion space around the perimeter of all the room and all other objects. For rooms greater than 7.6 m (25 ft.), a 15 mm (5/8 in.) expansion space is needed. The expansion space will be covered by the wall base or quarter round once the floor is installed.

**Maximum Room Size:** Select Surfaces laminate floors can be installed in a single room up to 40 linear feet (12 m) in length or 40 linear feet (12 m) in width. Installations in rooms that are over 40 linear feet in length or width must use T-moldings. Use a T-molding for rooms larger than 40 linear feet (12 m) in length and width and in any doorway.

## SUBFLOOR PREPARATION

### A. General Subfloor Preparations & Precautions

- Subfloors must be clean, free of dirt and debris prior to installation and structurally sound.
- Subfloor moisture must be tested prior to installation and should not exceed 12% throughout the installation area.
- Carpet is not a suitable underlay for laminate floors. All carpet, carpet pad, carpet tack and underpadding must be removed prior to installation.
- Variations in the subfloor flatness should not exceed 1/16 in per 3 ft (2 mm/m).
- There must be at least 1/2 in (12.5 mm) between the surface of the floor and the bottom of electrical baseboard heater to allow heat to circulate.
- Installations over electric radiant heated subfloors are acceptable, provided that the wiring is embedded into the mat or subfloor. Consult the heating manufacturer before installing the floor over radiant heating to ensure the model is compatible with laminate flooring. Ensure the below installation precautions are followed.
- It is recommended to maintain the temperature between 65-72°F (18-22°C).
- Temperature should never exceed 27°C (80°F).
- Radiant heat systems must be operating for a minimum of 3 weeks prior to installation of Select Surfaces laminate floors.
- Slight gaps may occur between laminate planks installed over radiant heating and will not be covered by the warranty.

### B. Concrete

Concrete subfloors must be properly cured and allowed to dry for at least 60 days prior to installation. Test the concrete subfloor for moisture prior to installation. A 6 mil (0.15 mm) polyethylene vapor barrier must be used when installing over concrete. Overlap vapor barrier edges by 8 in (20 cm) and seal with moisture resistant adhesive tape. Run vapor barrier 3/4 in (2 cm) up wall and trim after wall base is installed. Concrete subfloor should have a maximum allowable water emission of 5 lbs per 1,000 sq. ft. per 24 hours (2.26 kg per 101.6 m<sup>2</sup> per 24 hours).

### C. Wood

Wood subfloors must be structurally sound and screwed or nailed to supporting beams. Do not install Select Surfaces laminate floors over wood subfloors applied directly to concrete. If installing floors over a crawl space it is recommended that an 6 mil (0.15 mm) vapor barrier be installed. Overlap vapor barrier edges by 8 in (20 cm) and seal with moisture resistant adhesive tape. Run vapor barrier 3/4 in (2 cm) up wall and trim after wall base is installed. Wooden subfloors should not exceed a moisture content of 12% throughout the installation area.

### D. Vinyl (sheet/tile), Linoleum, Ceramic Tile

If vinyl, linoleum, or ceramic tile is installed over concrete, an 6 mil (0.15 mm) vapor barrier must be installed on top of it. Overlap vapor barrier edges by 8 in (20 cm) and seal with moisture resistant adhesive tape. Run vapor barrier 3/4 in (2 cm) up wall and trim after wall base is installed.

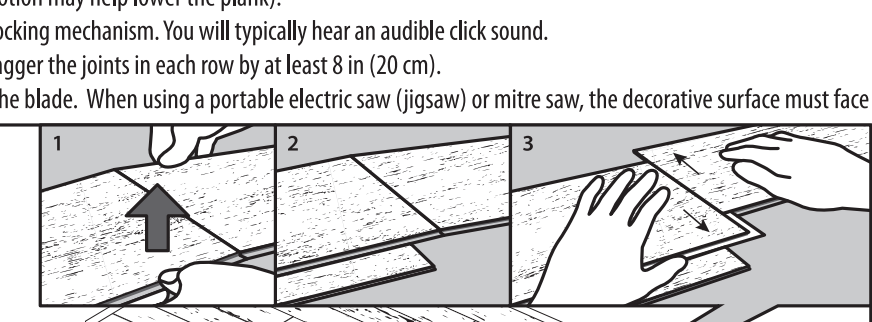
## INSTALLATION PROCEDURES

**Important: Never tap Select Surfaces laminate flooring during installation.**

It is recommended that planks be mixed from at least three cartons to achieve the most natural and varied results. Inspect every plank for damage before installing it. The first and last row of the installation should be wider than 3.5 in (9 cm). The first and last plank in a row should be a minimum of 16 in (40 cm) long and the rows should be staggered by a minimum of 16 in (40 cm). Use spacers to maintain the 3/8 in (10 mm) expansion gap.

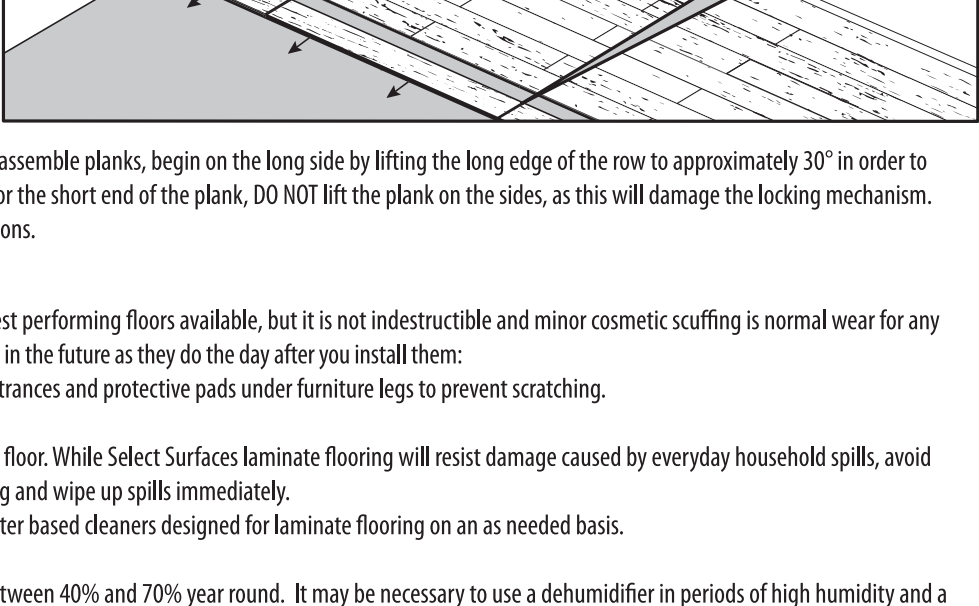
### A. FIRST ROW

- Select a starting corner of the room and work left to right.
- Lay the first plank with the long edge tongue facing the wall.
- Lift the right side of the second plank to a 30 degree angle and place its short end tongue into the groove of the first plank.
- Lower the plank to lock the two together.
- Continue in this manner until the first row is complete.
- Use the remainder of the last plank of the first row to start the second row provided that it is a minimum of 16 in (40 cm) long.
- To avoid ending the row with a plank of less than 16 in (40 cm) in length, it may be necessary to cut the first plank. Always remove the groove on the last plank.



### B. ALL OTHER ROWS

- Install the first plank of the second row by installing its long edge to the previous row's groove in a similar manner as you installed the short edges of the first row (i.e. 30 degree angle and lower).
- Install remaining planks as follows:
  - Install the long edge of the plank to the previous row.
  - Before lowering the plank, make sure it's short end tongue overlaps with the previous plank's short end groove.
  - Lower the plank slowly (a short oscillating or up-and-down motion may help lower the plank).
  - Apply pressure to the planks short edge so as to activate the locking mechanism. You will typically hear an audible click sound.
  - For a stronger and more natural-looking floor, make sure to stagger the joints in each row by at least 8 in (20 cm).
  - When cutting a plank, ensure the decorative surface is facing the blade. When using a portable electric saw (jigsaw) or mitre saw, the decorative surface must face upwards. When using a table saw, the decorative surface must face downwards.
- Create a watertight seal by first filling the entire expansion perimeter, T-molding spaces, and other open areas with 100% silicone caulking. DO NOT use acrylic sealants.
- During installation of moldings and transitions, apply silicone caulking to the edge of the molding or transition that will contact directly with the laminate flooring surface.
- Install moldings and immediately wipe away any excess silicone caulking.



If at any point in the installation it is necessary to disassemble planks, begin on the long side by lifting the long edge of the row to approximately 30° in order to disconnect the long edge installation mechanism. For the short end of the plank, DO NOT lift the plank on the sides, as this will damage the locking mechanism. Instead, slide the short ends apart in opposite directions.

## CARE & MAINTENANCE

Select Surfaces laminate flooring is among the highest performing floors available, but it is not indestructible and minor cosmetic scuffing is normal wear for any laminate floors. To ensure your floors perform as well in the future as they do the day after you install them:

- Place walk off mats and area rugs at main traffic entrances and protective pads under furniture legs to prevent scratching.
- Vacuum or dust mop to remove loose dirt or grit.
- Flooring can be wet mopped, but avoid soaking the floor. While Select Surfaces laminate flooring will resist damage caused by everyday household spills, avoid leaving standing liquid on the surface of the flooring and wipe up spills immediately.
- Do not use soap based cleaners. Spot clean with water based cleaners designed for laminate flooring on an as needed basis.
- Do not use polishes, waxes or abrasive cleaners.
- Maintain humidity level in the installation space between 40% and 70% year round. It may be necessary to use a dehumidifier in periods of high humidity and a humidifier in periods of low humidity.

## WARRANTY

Select Surfaces laminate flooring is covered by a limited lifetime warranty for residential use. The stipulations of the residential warranty are as follows:

- The flooring will be free from manufacturing defects.
- The decorative laminate surface will not wear through.
- The flooring will not fade due to sunlight, UV rays or electrical light.
- The flooring will resist moisture due to mopping and everyday household spills for a period up to 24 hours
- The flooring will not stain.
- Seams will not unlock under normal use conditions.

Select Surfaces laminate flooring is covered by a limited warranty of 25 years for commercial use. The stipulations of the commercial warranty are as follows:

- The flooring will be free from manufacturing defects.
- The decorative laminate surface will not wear through.
- The flooring will not fade due to sunlight, UV rays or electrical light.
- The flooring will resist moisture due to mopping and everyday household spills for a period up to 24 hours
- The flooring will not stain.
- Seams will not unlock under normal use conditions.

The Select Surfaces commercial use warranty is applicable to installations in the following areas without immediate access to street traffic; offices, hotel rooms and suites, hotel conference and multipurpose rooms, and retail stores.

This warranty is not applicable to installations in heavy commercial areas such as, but not limited to, airports, lobbies, mall corridors, schools, or commercial kitchens. To validate the commercial warranty, the flooring must be professionally installed following Select Surfaces installation guidelines and only installed in dry interior areas.

**The following conditions apply to the warranty and may void the warranty if not followed correctly. The owner must follow the care and maintenance guidelines.**

- The flooring must be installed according to the instructions provided.
- If filing a warranty claim it must be submitted within 30 days of the discovery of the damage.
- Surface wear must be evident and visible from a standing position, measuring at least 2 square inches (13 cm<sup>2</sup>). Gloss or sheen reduction is not surface wear and is not covered by the warranty.
- Proof of purchase, such as a bill of sale is mandatory when requesting warranty service.
- The manufacturer reserves the right to designate a representative to inspect the floor in question and remove samples for analysis.
- Removing flooring prior to contacting Select Surfaces Claim Department voids the warranty.
- The warranty includes the replacement material, and excludes labor cost.
- The warranty only applies to product installed indoors.
- Upon approval of a warranty claim, Select Surfaces will provide the claimant with instructions on how to proceed to have the flooring repaired or replaced. The claimant has 90 days to comply with the instructions. If the claimant fails to do so within 90 days, all rights under the limited warranty are waived.

## WARRANTY EXCLUSIONS

- Damage due to improper installation, care, cleaning, or maintenance.
- This warranty is not applicable to heavy commercial areas including but not limited to airports, lobbies, mall corridors, schools, or commercial kitchens. This warranty is not applicable to any setting subject to heavy rolling loads or machinery, or areas where industrial wet cleaning machines may be used. To validate the commercial warranty, the flooring must be professionally installed following Select Surfaces installation guidelines and only installed in dry interior areas.
- Damage caused by severe impact, scratching, or cutting, fire, water damage, alterations, or any other wear or damage caused by acts of God.
- Slight gaps may occur between laminate planks installed over radiant heating and will not be covered by the warranty.
- Peeling and wear in beveled-edged products along the edge of the panels less than 3/16 in (5 mm) from the edge is not covered by the warranty.
- The limited warranty does not apply to moldings.
- The warranty applies only to flooring purchased through an authorized dealer.
- This warranty does not cover defects caused by improper sub-floor / surface preparation (proper installation is assumed to include a moisture test to ensure excessive moisture does not exist in the subfloor). A vapor barrier must be used for those on concrete sub-floors, below grade level or in moisture-prone areas.
- This warranty does not apply to damage caused by water or moisture in the subfloor or underneath the flooring, including but not limited to damage from subfloor hydrostatic pressure (water or moisture under the floor that is transmitted to the surface through exerted pressure) or other conditions that result in water or moisture below the floor.
- The warranty does not apply to damage caused by events beyond everyday household spills including, but not limited to, flooding and standing water due to leaking pipes, mechanical failures or appliance leaks. It is recommended that spills be cleaned immediately.
- These limited warranties do not apply to damage caused by water or moisture in the subfloor or underneath the flooring, including but not limited to damage from subfloor hydrostatic pressure (water or moisture under the floor that is transmitted to the surface through exerted pressure)
- The seams of the laminate flooring will resist water penetration for a period of up to 24 hours.
- When excessive moisture accumulates on buildings or on building materials, mold and/or mildew growth can occur. This warranty excludes damage resulting from mold and/or mildew growth due to prolonged exposure to moisture.
- Environments where heavy snow or water will be tracked in and not cleaned up are excluded from the warranty.

Select Surfaces offers no other warranty, expressed or implied. This warranty replaces all other warranties.

**⚠ WARNING** Drilling, sawing, sanding or machining wood products can expose you to wood dust and other chemicals, which are known to the State of California to cause cancer. Avoid inhaling wood dust or use a dust mask or other safeguards for personal protection. For more information go to [www.P65Warnings.ca.gov/wood](http://www.P65Warnings.ca.gov/wood).

**Precautionary measures:** If dust level is high, avoid inhalation of wood dust by wearing the appropriate NIOSH designated dust mask. Use adequate personal protective equipment to avoid dust contact with eyes and skin. Equip machine power tools with a dust collector to reduce the emission of wood dust.

**IMPORTANT HEALTH NOTICE FOR MINNESOTA RESIDENTS ONLY:** SOME OF THE BUILDING MATERIALS USED IN THIS HOME (OR THESE BUILDING MATERIALS) EMIT FORMAL-DEHYDE, EYE, NOSE, AND THROAT IRRITATION, HEADACHE, NAUSEA AND A VARIETY OF ASTHMA-LIKE SYMPTOMS, INCLUDING SHORTNESS OF BREATH, HAVE BEEN REPORTED AS A RESULT OF FORMALDEHYDE EXPOSURE. ELDERLY PERSONS AND YOUNG CHILDREN, AS WELL AS ANYONE WITH A HISTORY OF ASTHMA, ALLERGIES, OR LUNG PROBLEMS, MAY BE AT GREATER RISK. RESEARCH IS CONTINUING ON THE POSSIBLE LONG-TERM EFFECTS OF EXPOSURE TO FORMALDEHYDE. REDUCED VENTILATION MAY ALLOW FORMALDEHYDE AND OTHER CONTAMINANTS TO ACCUMULATE IN THE INDOOR AIR. HIGH INDOOR TEMPERATURES AND HUMIDITY RAISE FORMALDEHYDE LEVELS. WHEN A HOME IS TO BE LOCATED IN AREAS SUBJECT TO EXTREME SUMMER TEMPERATURES, AN AIR-CONDITIONING SYSTEM CAN BE USED TO CONTROL INDOOR TEMPERATURE LEVELS. OTHER MEANS OF CONTROLLED MECHANICAL VENTILATION CAN BE USED TO REDUCE LEVELS OF FORMALDEHYDE AND OTHER INDOOR AIR CONTAMINANTS. IF YOU HAVE ANY QUESTIONS REGARDING THE HEALTH EFFECTS OF FORMALDEHYDE, CONSULT YOUR DOCTOR OR LOCAL HEALTH DEPARTMENT.

## FILING A CLAIM

Any claim under the above warranty must be made within 30 days after the issue is detected by contacting Select Surfaces Technical Support by email at [techsupport@selectsurfaces.ca](mailto:techsupport@selectsurfaces.ca) or by telephone at 1-855-250-8167. Proof of purchase (indicating the date of purchase) must be presented to file a claim. Select Surfaces reserves the right to send a representative to inspect the floor and remove samples for analysis. If the claimant fails to give reasonable cooperation to the representative to inspect the flooring and remove samples, Select Surfaces shall be under no obligation to provide any remedies to the claimant.

**\*Important to note\*: The owner/purchaser must inspect the color, finish and quality before installation. The manufacturer cannot be held responsible for costs incurred when a floor with visible defects has been installed.**

**For questions regarding installation, please contact our Technical Support Department by email at [techsupport@selectsurfaces.ca](mailto:techsupport@selectsurfaces.ca) or by telephone at 1-855-250-8167. To purchase matching moldings, please contact our Customer Service Department at [info@selectsurfaces.ca](mailto:info@selectsurfaces.ca) or visit [www.selectsurfaces.ca](http://www.selectsurfaces.ca).**

